

Technical sheet :

160 ATJ+ E



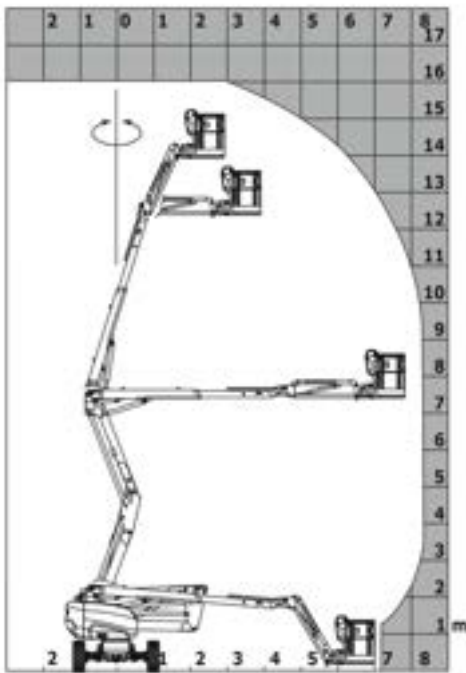
Capacities		Metric	Imperial
Working height	h21	16.21 m	53 ft 2 in
Platform height	h7	14.21 m	46 ft 7 in
Max. outreach		8.34 m	27 ft 4 in
Overhang		7.40 m	24 ft 3 in
Pendular arm rotation (top / bottom)		+66.50 ° / 65.80 °	+66.50 ° / 65.80 °
Platform capacity	Q	408 kg	899 lb
Turret rotation		350 °	350 °
Platform rotation (right / left)		90 ° / 90 °	90 ° / 90 °
Number of people (inside / outside)		3 / 3	3 / 3
Weight and dimensions			
Platform weight*		7790 kg	17174 lb
Platform dimensions (length x width)	lp / ep	1.80 m x 0.80 m	5 ft 11 in x 2 ft 7 in
Overall width	b1	2.38 m	7 ft 10 in
Overall length	l1	6.88 m	22 ft 7 in
Overall height	h17	2.48 m	8 ft 2 in
Overall length (stowed)	l9	4.70 m	15 ft 5 in
Overall height (stowed)	h18	2.94 m	9 ft 8 in
Floor height (access)	h20	0.42 m	1 ft 5 in
Counterweight offset (turret at 90°)	a7	0.37 m	1 ft 3 in
Internal turning radius (over tyres)	b13	1.42 m	4 ft 8 in
External turning radius	Wa3	3.78 m	12 ft 5 in
Ground clearance at centre of wheelbase	m2	0.36 m	1 ft 2 in
Wheelbase	y	2.30 m	7 ft 7 in
Performances			
Drive speed - stowed		5 km/h	3 mi/h
Drive speed - raised		1 km/h	0.62 mi/h
Gradeability		45 %	45 %
Permissible leveling		5 °	5 °
Wheels			
Tyres type		Foam-filled	Foam-filled
Dimensions of front wheels / rear wheels		914 - 370	914 - 370
Drive wheels (front / rear)		2 / 2	2 / 2
Steering wheels (front / rear)		2 / 2	2 / 2
Braking wheels (front / rear)		0 / 2	0 / 2
Engine/Battery			
Battery / Batteries capacity		48 V / 480 Ah	48 V / 480 Ah
Integrated charger (V / A)		48 V / 60 A	48 V / 60 A
Miscellaneous			
Ground Pressure		11.60 dan/cm2	168 PSI
Hydraulic Pressure		250 bar	3626 PSI
Hydraulic tank capacity		24 l	6 US gal
Standards compliance			
This machine is in compliance with:		European directives: 2006/42/EC- Machinery (revised EN280:2013) - 2004/108/EC (EMC) - 2006/95/EC (Low voltage)	European directives: 2006/42/EC- Machinery (revised EN280:2013) - 2004/108/EC (EMC) - 2006/95/EC (Low voltage)

*Varies according to options and standards of the country to which the machine is delivered

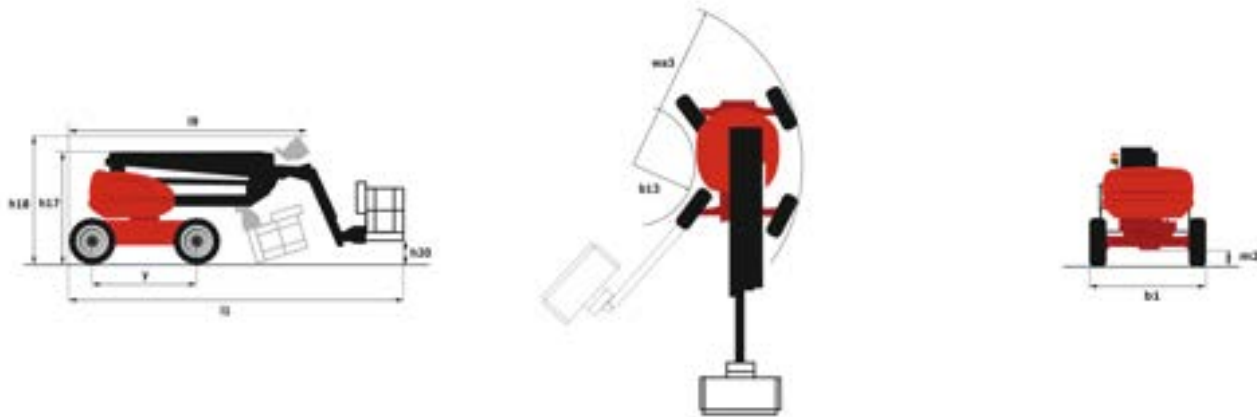
** According to "REDUCE cycle"

160 ATJ+ e - Load chart

Load Chart for AWP Metric



160 ATJ+ e - Dimensional drawing



Equipment

Standard

220V predisposition in the platform
4 simultaneous movements
4 wheel drive
4 wheel steer with crab mode
Audible alarm and illuminated indicator lamp (leveling, overload, lowering)
Backup electrical pump
Basket 1,800 mm
CAN bus technology
Dead man pedal
Differential locking on rear axle
Easy Link with 2 year Service
Easy Manager
Emergency stop button in platform and on frame
Front axle with limited slip
Fully galvanized basket with demountable floor
Horn in the platform
Hour meter
LED rotating beacon
Leveling unlocking
Load sensing pump
Oscillating front axle
SPS : Secondary protection system
Screen information in the basket
Simplified slinging without a spreader bar
Slinging and securing rings
Steer and rotate
Turret orientation information

Optional

18" tyres
Beep on every movement
Beep upon travel
Biodegradable hydraulic oil
Biodegradable oil
Bottom screen protection
Continuous turret rotation
Digicode anti-theft device
Easy link with access control keypad
Easy link with remote lock
Electric centralized filling
Fully galvanized basket 1800mm with lateral door
Galvanized basket 2,100 mm
Galvanized basket 2.100 mm with lateral door
Key lock on turret cover
Locking the telescope by parameter setting
Lynx cry beeper on movement
Personalized paintwork
Safety kit (Harness + helmet)
Water predisposition



Head Office

B.P. 249 - 430 rue de l'Aubinière

44150 Ancenis Cedex - France

Tel: +33 (0)2 40 09 10 11 - Fax: +33 (0)2 40 09 10 97

www.manitou.com



This publication provides a description of the configuration versions and options for Manitou products, which may differ for equipment. The equipment presented in this brochure may be part of a series, as an option, or it may not be available, depending on the versions. Manitou reserves the right, at any time and without notice, to amend the specifications described and represented. The specifications provided do not bind the manufacturer. For more details, please contact your Manitou agent. This is not a contractually binding document. The presentation of the products is not contractually binding. List of specifications non-exhaustive. The logos as well as the visual identity of the company are owned by Manitou and cannot be used without authorisation. All rights reserved. The photos and diagrams contained in this brochure are only provided for consultation and information purposes.

MANITOU BF SA - Limited company with board of directors - Share capital: 39,668,399 euros - 857 802 508 RCS Nantes