

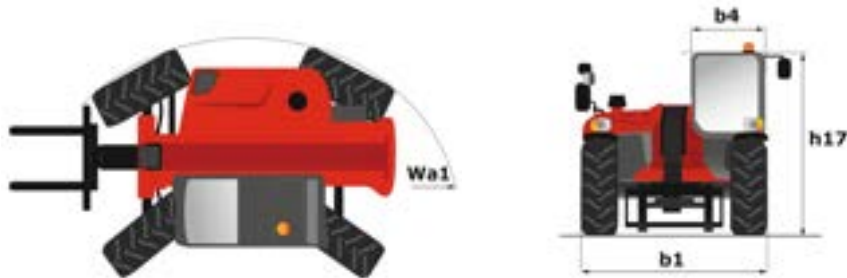
Technical sheet :

MT 625 E



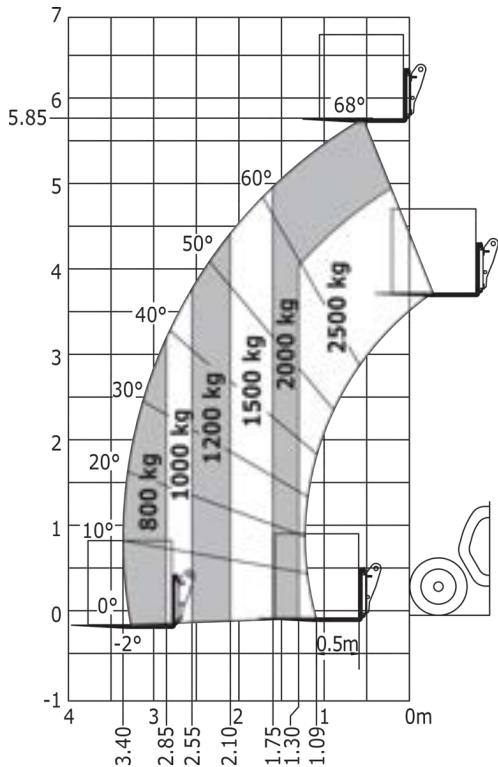
Capacities		Metric	Imperial
Max. capacity		2500 kg	5512 lb
Max. lifting height		5.85 m	19 ft 2 in
Max. outreach		3.40 m	11 ft 2 in
Weight and dimensions			
Overall length to carriage	l11	3.83 m	12 ft 7 in
Overall length (with forks)	l1	5.09 m	16 ft 9 in
Overall width	b1	1.81 m	5 ft 11 in
Overall height	h17	1.92 m	6 ft 4 in
Wheelbase	y	2.30 m	7 ft 7 in
Ground clearance	m4	0.33 m	1 ft 1 in
Overall cab width	b4	0.79 m	2 ft 7 in
Tilt-up angle	a4	12 °	12 °
Tilt-down angle	a5	134 °	134 °
External turning radius (over tyres)	Wa1	3.31 m	10 ft 10 in
Unladen weight (with forks)		4756 kg	10485 lb
Overall weight		4756 kg	10485 lb
Tyres type		Pneumatic	Pneumatic
Standard tyres		CAMSO SKS532 12-16.5	CAMSO SKS532 12-16.5
Forks length / width / section	l / e / s	1200 mm x 125 mm / 45 mm	47 in x 5 in / 2 in
Performances			
Lifting		9 s	9 s
Lowering		6 s	6 s
Extension		6 s	6 s
Retraction		4 s	4 s
Crowd		3 s	3 s
Dump		3.50 s	3.50 s
Engine			
Drawbar pull (Laden)		2090 daN	2090 daN
Transmission			
Transmission type		Electrical	Electrical
Number of gears (forward / reverse)		1 / 1	1 / 1
Parking brake		SAHR	SAHR
Service brake		Hydraulic	Hydraulic
Hydraulics			
Hydraulic pump type		Gear pump	Gear pump
Hydraulic flow / Pressure		78 l/min / 235 bar	21 US gpm / 3408 PSI
Tank capacities			
Hydraulic oil		66 l	17 US gal
Miscellaneous			
Steering wheels (front / rear)		2 / 2	2 / 2
Drive wheels (front / rear)		2 / 2	2 / 2

MT 625 e - Dimensional drawing



MT 625 e - Load chart

Machine on tyres with forks Metric





Head Office

B.P. 249 - 430 rue de l'Aubinière

44150 Ancenis Cedex - France

Tel: +33 (0)2 40 09 10 11 - Fax: +33 (0)2 40 09 10 97

www.manitou.com



This publication provides a description of the configuration versions and options for Manitou products, which may differ for equipment. The equipment presented in this brochure may be part of a series, as an option, or it may not be available, depending on the versions. Manitou reserves the right, at any time and without notice, to amend the specifications described and represented. The specifications provided do not bind the manufacturer. For more details, please contact your Manitou agent. This is not a contractually binding document. The presentation of the products is not contractually binding. List of specifications non-exhaustive. The logos as well as the visual identity of the company are owned by Manitou and cannot be used without authorisation. All rights reserved. The photos and diagrams contained in this brochure are only provided for consultation and information purposes.

MANITOU BF SA - Limited company with board of directors - Share capital: 39,668,399 euros - 857 802 508 RCS Nantes