

RANGE
TJ



Take a look and find out
more information
on [manitou.com](https://www.manitou.com)

 **MANITOU**
HANDLING YOUR WORLD

Securing the operators and their environment

Manitou is committed to designing machines that provide optimum safety for users.

Have you thought about SPS?

(Secondary Protection System)

The SPS is a safety solution for the operator and is activated in the event of a crush or discomfort of the operator. Its activation is multi-directional to guarantee optimal safety. Finally, the thickness of the cable allows the operator to have full visibility of the controls.



Access the Getting Started videos using the QR Code on the machine

Reduce Risks helps you to use your machines safely



- **Pedal presence in basket**
Activation of the pedal presence is required to perform any movement on the machine.
- **Electronic basket compensation**
Automatic basket levelling for operator comfort.
- **Load sensor and tilt sensor**
Audible indicators are provided in the event of an overloaded basket or too great a slope.
- **Double rail and openwork basket**
The guarantee of operator protection and full visibility of the working environment.
- **Electric emergency pump**
To ensure efficient and rapid assistance.
- **Speed adaptation**
Different travel speeds depending on turret orientation and steering mode (2 WS/4 WS/crab mode) for operator safety.
- **Drive Enable feature**
Invites the operator to check the direction of travel when the turret is oriented over 90°.



Significant reduction of your operating costs

Throughout the project, we take your total cost of ownership into account in order to develop high-performance, robust and cost-optimised machines.

- **Easy access to components**
The motor is located on a swivel chair and is quickly accessible. The opening of the covers is effortless thanks to the opening cylinders.
- **Easy maintenance**
The integrated CAN bus technology allows for a quick overview of faults and their origins.
- **Optimal maintenance**
The new YANMAR engines allow for longer intervals between engine oil changes.
- **Underwater brakes**
This highly reliable architecture is perfectly suited to rough conditions.

Stop & GO

The standard Stop and Go system limits engine use, fuel consumption and wear. The hour meter is based on actual working hours, spacing out maintenance and significantly increasing the resale value of your machine.



Use only what you need

Thanks to the machine settings, the motor power output is adapted to the required movement.



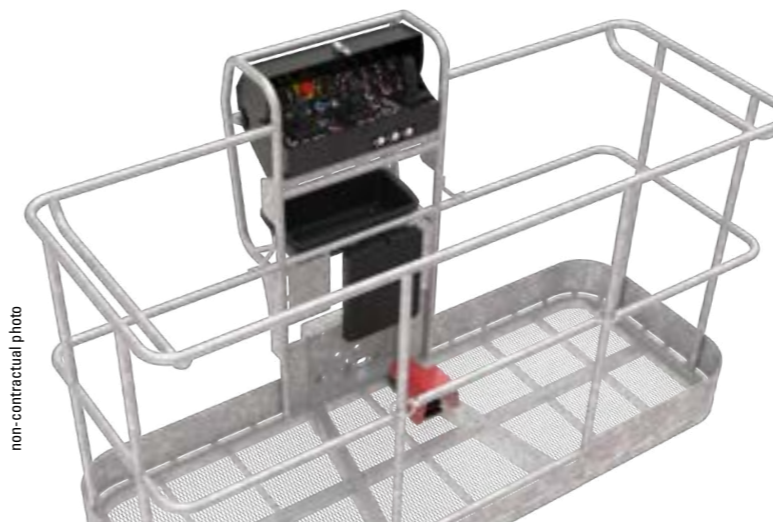
All our platforms are connected as standard!

Connected solutions

Your aerial platform has something special: thanks to connectivity, you can follow its position in real time and optimise the operational follow-up of your equipment.

- **View in real time**
Manage your fleet remotely and benefit from a wealth of information about your machines accessible on your PC, tablet or smartphone.
- **Analyse performance**
View the performance of your machines in a graphical format that is easy to follow and interpret.
- **Anticipate maintenance**
Save time: share your alerts directly with the technician to anticipate parts and reduce response time.
- **Protect your equipment and control access**
As an option you can manage driving authorisations and control operator access to your machines to ensure their safety and that of the workplace.

Driving a TJ has never been so easy



- **Simplified handling**
The basket and floor controls are ergonomically designed and standardised across the range.
- **Operator comfort**
Large basket with one or three entries.
- **Intuitive human/machine interface**
A large colour screen displays information via an alert system.

Continuous rotation

4 simultaneous movements

4 wheel drive wheel steering

3 steering modes



Optional: Automatic wheels alignment

X/Y function simplifies repetitive work

Vertical or horizontal linear movement of the basket. (only on 260 TJ+ / 280 TJ)



Telescopic jib

Unique in the 28 metres, this specificity gives the operator more possibilities. For example, in applications that require negative positioning (work behind a wall, an embankment, etc.).

Flexibility of movement basket & machine

Automatic slowing down of the hydraulic movements at the end of the stroke allows the operator to feel safe.

Turret

Turret rotation is via a hydraulic motor whose speed varies according to the extension of the telescope.



All main movements are controlled via proportional joysticks for a more precise approach. Standardised control station throughout the TJ range.



The large screen at the lower control box offers additional information to the top control box for operator and allows technicians to carry out a quick diagnosis, consult the machine memory and many other functions thanks to a simple and intuitive navigation.

Did you know that ?

Using a code, you can modify certain options to adapt the machine to the needs of your customers (flashing light on contact, flashing light on movement, all movement beep...).

Reinforced structure

The market reference

Our structures have always been known for their reinforced design and durability. Regardless of the product chosen, the articulation heights and working offsets set the standard in their class

Regeneration to do what ?

With the introduction of Stage 5, our machines are now equipped with a filter. The filter is designed to capture the pollutant particles emitted by the engine. When the filter is clogged, the machine performs regeneration to burn off the accumulated particles. They can be scheduled at your request. We chose an engine manufacturer who managed the different types of regeneration very smoothly so that they were as easy as possible. For full regeneration levels, contact your Manitou dealer.

FOLDING REMOTE CONTROL

Available on our TJ (opt. 220 TJ), it is located under the turret and allows the carrier to fold the machine in complete safety once it has been loaded.



One-point slinging

Clearly marked lashing and slinging points for easy transport

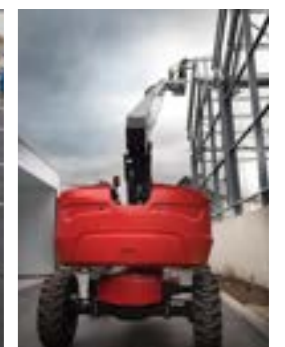


The rough terrain range

Our chassis are perfectly suited for rough terrain conditions. The design of the chassis, the high ground clearance and the active swing axle guarantee excellent handling on off-road terrain.

Optimal performance

Since its inception, Manitou has equipped its rough-terrain aerial work platforms with drive axles. These highly reliable components are perfectly suited to the toughest conditions and offer superior performance to other technologies.



Maximum tilt **4°** Longitudinal and lateral



	220 TJ	220 TJ+	260 TJ+	280 TJ
Basket capacity (kg)	230	408	408	240/350
Working height (m)	21.77	21.74	25.89	27.73
Platform height (m)	19.77	19.74	23.89	25.73
Working offset (m)	17.63	17.79	19.7	21.45
Platform dimensions (m) (Lxwxh)	9.81 x 2.48 x 2.66	10.06 x 2.48 x 2.66	10.84 x 2.48 x 2.71	11.35 x 2.48 x 2.73
Dimensions - stowed (m) (Lxwxh)	7.29 x 2.48 x 2.72	7.36 x 2.48 x 3.03	7.88 x 2.48 x 2.80	8.09 x 2.48 x 2.71
Basket dimensions (m) (Lxw)	2.1 x 0.8	2.3 x 0.9	2.3 x 0.9	2.3 x 0.9
Engine power (kW)	YANMAR - 27.5	YANMAR - 27.5	YANMAR - 34.3	YANMAR - 34.3
Tyres type	Cured-on solid	Cured-on solid	Cured-on solid	Cured-on solid
Total weight (kg)	11850	13600	16400	16500

Number of operators

Continuous turret rotation

Crossable slope

Driving and steering wheels

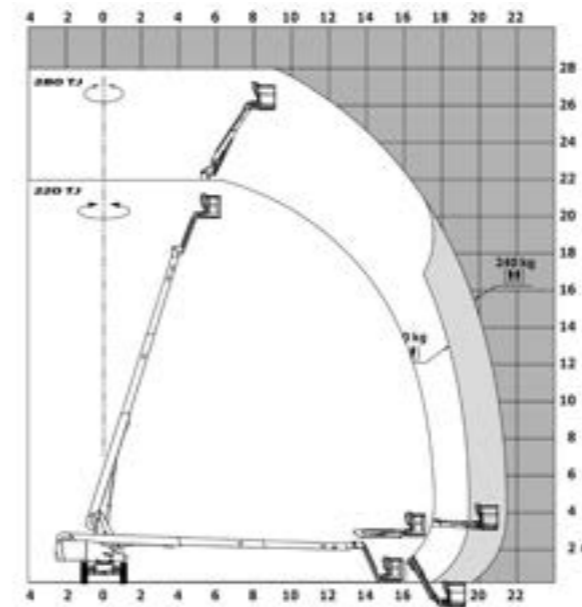
220 TJ+ 260 TJ+

- + CAPACITY
- + PERFORMANCE
- + TOOLS

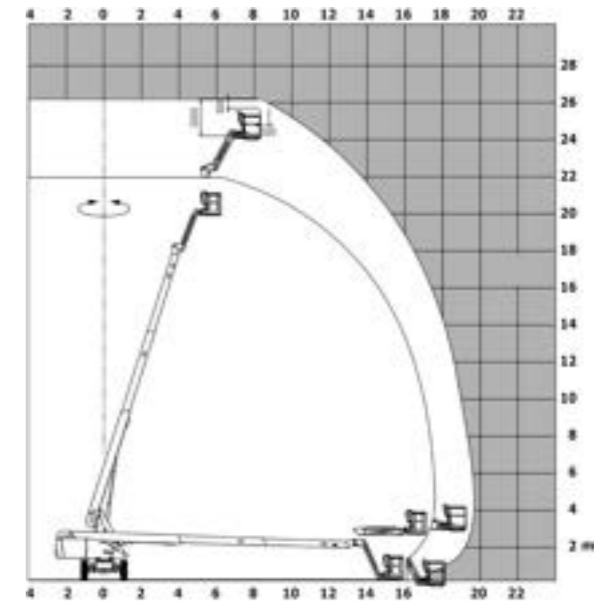
408kg
3 people

Large tool box
Large basket of 2,3 m x 0,9 m

220 TJ - 280 TJ



220 TJ+ - 260 TJ+



A range of specific options



Tube holder
Carry up to 50 kg on the rack while respecting the environment of the operators.



Panel holder
Allows a panel or window to be raised up to 113 kg.



Basket with gate
Facilitates entry into the basket (two entrances with rails and one entrance with wicket).

A wide range of options

To access all the options, ask your Manitou contact for advice.



On-board generator
It will allow you to produce electricity autonomously, wherever you are.



Non-marking tyres
For specific applications, these tyres make it possible to leave no marks on the ground.



Cold weather hydraulic oil
Hydraulic oil designed for your machine operating in low temperature environments.



What is important as a fleet manager is the turnover rate. That's why I need a machine that is easy to maintain and that allows me to anticipate maintenance! All of this while meeting our safety regulations and being versatile enough to be rented anywhere.

Your dealer



This publication describes the versions and configuration possibilities of Manitou products which may differ in equipment. The equipment shown in this brochure may be standard, optional or not available depending on the version. Manitou reserves the right to change the specifications described and shown at any time without notice. The specifications shown are not binding on the manufacturer. For more details, contact your Manitou dealer. Non contractual document. The logos and visuals of the company are the property of Manitou and may not be used without permission. All rights reserved. The photos and diagrams contained in this brochure are provided for reference purposes only. Manitou BF SA - Public limited company with a Board of Directors - Share capital: 39,547,824 euros - 857 802 508 RCS Nantes

©Manitou ©Adobe stock